

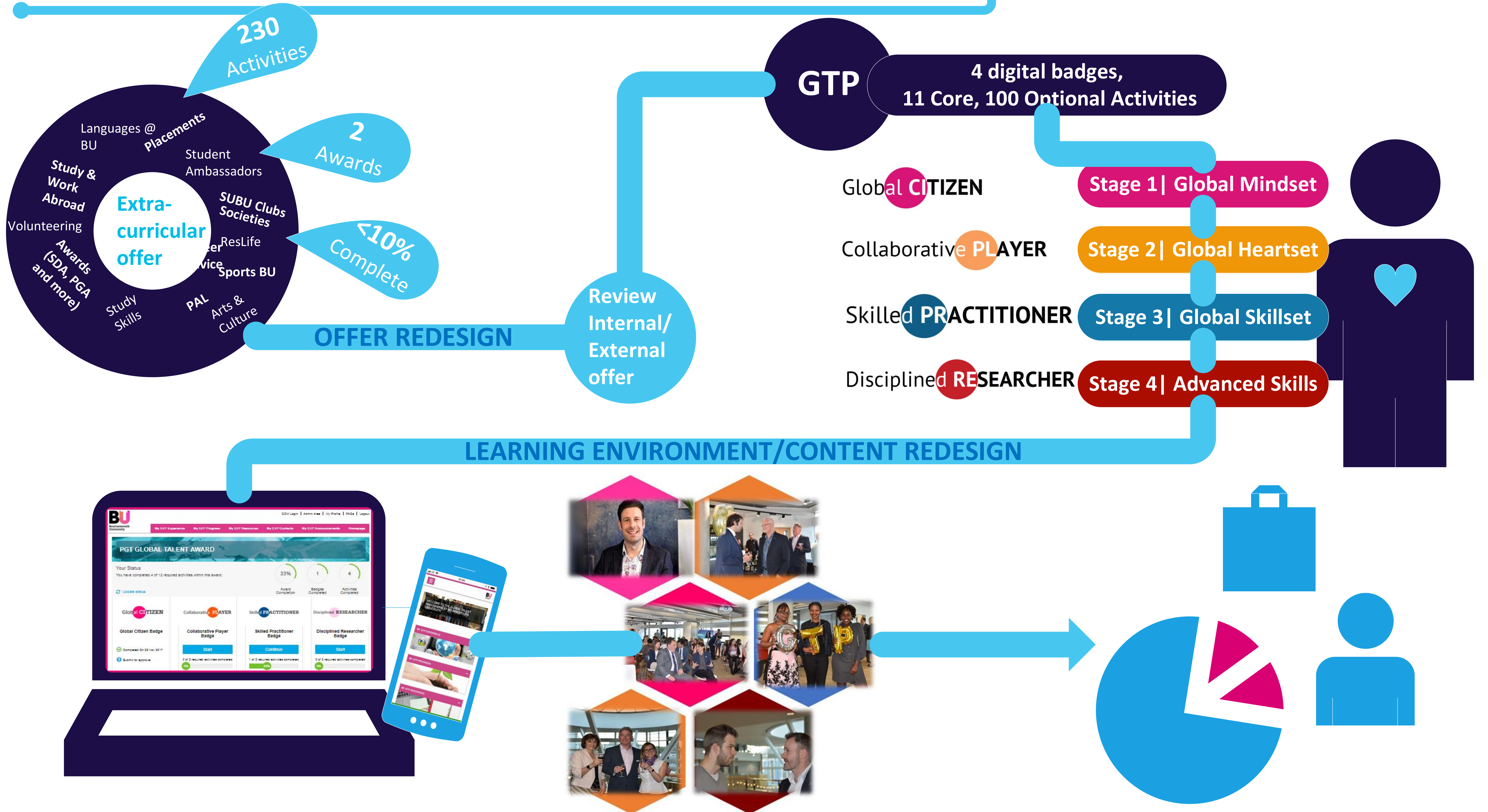


## Developing work-ready graduates

GTP is a flagship experiential learning programme designed to facilitate student engagement, experience and employability. The programme is an umbrella brand for the University's portfolio of extra curricular activities leading to a recognised extra curricular award.

*"The Global Talent Programme offers the amazing opportunity to enhance our global personality and CV, making us more employable. It is also an excellent opportunity to connect and build relationships with professionals and other students at the University"*

Carina, BU Student



## Personalised Learning Solutions

- GTP Portal**  
With 1023 users and 23,922 engagements over the year, the GTP bespoke learning platform provides real-time progress monitoring, direct links to over 100 activities and events and automated communications to drive student engagement
- GTP Mobile App**  
The GTP mobile app offers enhanced mobile user experience, all activities and resources available on the go, push notification reminders and no login restrictions
- GTP Learning games**  
100+ students have played the GTP online games offering a digital alternative to the core learning content

## Employer co-creation - real life challenges

- 70%+** of core workshops delivered by **global employers, social entrepreneurs, start-ups and students**
- 14** Organisations were represented in 2017/18 alone
- 100%** of workshops include challenge-based learning

## Impact

- 1000+** students engaged
- 2746** Activities and **691** badges completed
- 194** Global Talent Awards achieved
- 100%** rated speakers and teaching quality as good, very good or excellent
- 90%+** are more likely to explore new opportunities for research, study and work abroad



*"I believe that initiatives like the Global Talent Programme give students the opportunity to see companies with different eyes before their first job. Usually, soon after a student graduates, they realise life isn't about high grades, but continuously solving real-life problems that directly affect hundreds of people"*

Rodrigo Bautista, Founder - Ticketpass

Initially funded and supported by

